



Indian School Al Wadi Al Kabir

Pre Mid-Term Examination (2025-2026)

Class: VII
Date: 18/05/2025

Subject: SCIENCE
Set – II

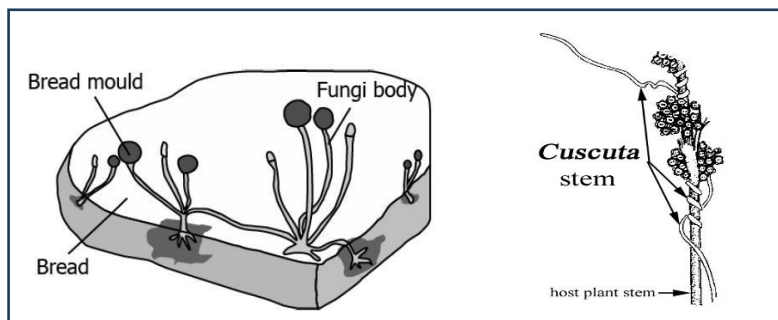
Max. Marks: 30
Time: 1 Hour

General Instructions:

- i. All questions are compulsory. Marks are indicated against each Section.
- ii. The question paper comprises of 4 pages and 15 questions in 5 sections A, B, C, D and E.
- iii. Q 1 to Q 4 in **Section A** are MCQ and carry ONE mark each. Write the correct answer along with option only in the answer script.
- iv. Q 5 to Q 7 in **Section A** are ASSERTION AND REASON type and carry ONE mark each.
- v. Q 8 to Q 10 in **Section B** are Short Answer Type questions and carry TWO marks each.
- vi. Q 11 to Q 13 in **Section C** are Short Answer Type Questions and carry THREE marks each.
- vii. Q 14 in **Section D** is a Long Answer Type Question and carries FIVE marks.
- viii. Q 15 in **Section E** is a Paragraph Question and carries THREE marks.
- ix. Write the same question number as given in the question paper.
- x. Whitener should not be used in the answer script.
- xi. Diagrams should be drawn using a pencil.

SECTION A (1X7=7)

1. The image shows two different organisms.



Which of these characters is shared by both?

- (a) Both have insectivorous mode of nutrition.
- (b) Both have heterotrophic mode of nutrition.
- (c) Both can fix atmospheric nitrogen.
- (d) Both have chlorophyll to perform photosynthesis.

2. What is the role of trees in maintaining the quality of soil?
- (a) Roots of trees hold the soil particles and keep them fertile.
 - (b) Trees absorb water from the soil and make their food.
 - (c) Cutting down trees makes the land barren.
 - (d) Trees deplete nutrients from the soil.
3. A student studies about acids and bases. Help him to find out the basic substances from the following.
- (a) Toothpaste and Spinach
 - (b) Spinach and Curd
 - (c) Curd and Baking Soda
 - (d) Toothpaste and Baking Soda
4. What is the effect of adding China rose indicator to acidic solution?
- (a) Turns yellow
 - (b) Turns magenta
 - (c) Turns blue
 - (d) Turns green

For the following questions, two statements are given- one labelled Assertion (A) and the other labelled Reason (R). Select the correct answer to these questions from the codes (i), (ii), (iii), and (iv) as given below

- (i) Both A and R are true and R is the correct explanation of assertion.***
- (ii) Both A and R are true but R is not the correct explanation of assertion.***
- (iii) A is true but R is false.***
- (iv) A is false but R is true***

5. **Assertion (A):** Mushrooms are saprotrophs.

Reason (R): Mushrooms absorb nutrients from dead and decaying matter.

6. **Assertion (A):** The solutions which are neither acidic nor basic are called neutral solutions.

Reason (R): Lemon juice is of acidic nature because it contains citric acid.

7. **Assertion (A):** Lichens are a symbiotic association of algae and fungi.

Reason (R): The fungus supplies food to the algae and, in return, the algae supply water and minerals to the fungus.

SECTION B (2X3=6)

8. (a) Define poles of a magnet.

(b) What happens to the magnetic poles when a magnet is broken into two parts?

9. If you are provided with four colourless solutions: Sodium hydroxide, water, Hydrochloric acid and vinegar, how will you identify each of them by using only red litmus paper?

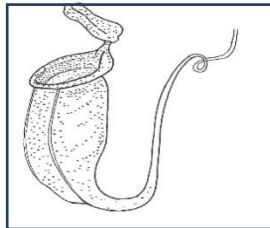
S. No.	Test Solution	Effect on Red litmus paper
1.	Sodium Hydroxide	
2.	Water	
3.	Hydrochloric Acid	
4.	Vinegar	

10. (a) Define acid rain.

(b) How is litmus extracted? What is the use of this solution?

SECTION C (3X3=9)

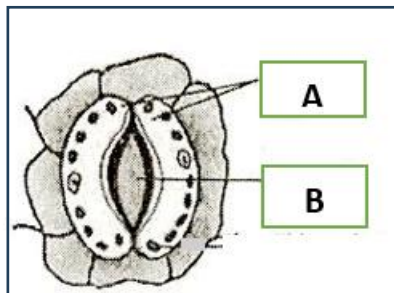
11. Observe the given picture and answer the questions.



(a) Name the plant and its mode of nutrition.

(b) How does this plant trap its prey?

(c) Observe the diagram below and label the parts marked as A and B.



12. (a) What are renewable resources?
(b) Why is the Sun considered the primary source of energy for life on Earth?
(c) Give two examples of non-renewable resources.
13. (a) State two main difference between acids and bases.
(b) Why does a yellow curry stain on a white shirt turn red when it is washed with soap?

SECTION D (5X1=5)

14. (a) What is photosynthesis? Draw a well labelled diagram of photosynthesis.
(b) Write the word equation for photosynthesis.
(c) Why is photosynthesis important in nature?

SECTION E (3X1=3)

15. Though a lot of nitrogen gas is present in the air but the plants cannot use nitrogen in gaseous form. The plants such as gram, peas, lentils and beans are called leguminous plants. The leguminous plants have root nodules in them which contain Rhizobium bacteria. These bacteria can convert nitrogen gas of air into nitrogen compounds. In return, plants provide food and shelter to the bacteria. They, thus, have a symbiotic relationship. The growing of leguminous crops in the fields is of great importance to the farmers. This is because the farmers do not need to put nitrogen fertilisers in the fields in which leguminous crops have been grown earlier.

- (a) Name any two leguminous plants.
(b) What is the role of rhizobium bacteria in leguminous plant?
(c) How is growing of a leguminous crop in the fields beneficial to farmer?